

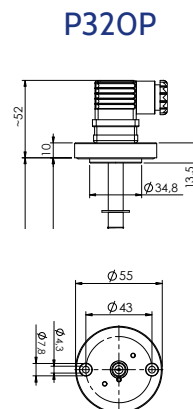
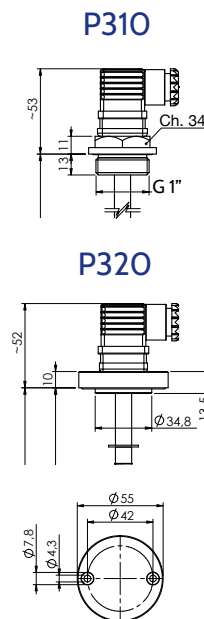
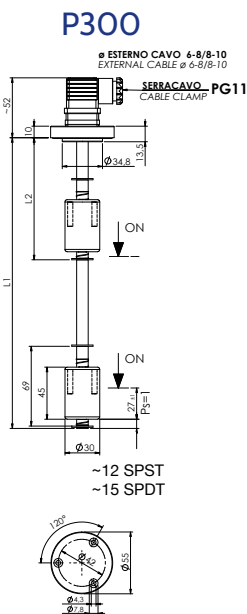
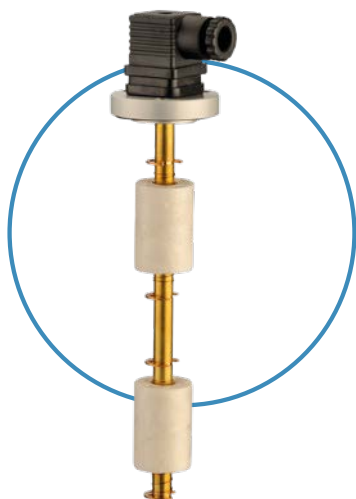


# P3x0 SENSORE DI LIVELLO ELETTRIMAGNETICO ELECTROMAGNETIC LEVEL SENSOR

A richiesta sono disponibili le certificazioni:    
Certifications available on request:



Codice Part number					
Lunghezza / Length L1 mm	Lunghezza / Length L2 mm	Flangia Alluminio 3 fori 3 holes Aluminun Flange	Attacco 1" GASi Thread G 1"	Flangia 2 fori int. 42 2 holes Flange int. 42	Flangia 2 fori int. 43 2 holes Flange int. 43
200	95	P300200 - 600	P310200 - 600	P320200 - 600	P320P200 - 600
250	105	P300250 - 600	P310250 - 600	P320250 - 600	P320P250 - 600
300	105	P300350 - 600	P310300 - 600	P320300 - 600	P320P300 - 600
350	115	P300350 - 600	P310350 - 600	P320350 - 600	P320P350 - 600
400	115	P300400 - 600	P310400 - 600	P320400 - 600	P320P400 - 600
450	125	P300450 - 600	P310450 - 600	P320450 - 600	P320P450 - 600
500	125	P300500 - 600	P310500 - 600	P320500 - 600	P320P500 - 600

Per passare da N.C. a N.A. è sufficiente capovolgere il galleggiante / The contact can be converted from N.C. to N.O. by rotating the float upside down

Per versioni personalizzate (lunghezza, temperatura > 100°C, ecc.) contattare i nostri Uffici Commerciali.  
For customized version (length, temperature > 100°C, etc.) please contact our Customer Service.

Impiego Use	Oli minerali - Carburanti - Acqua Mineral oils - Fuels - Water
Fissaggio Fixing	Alluminio anodizzato Anodized aluminum
Stelo Stem	Ottone Brass
Galleggiante Float	Nylon espanso (per pressioni > di 1 bar si consiglia il galleggiante in NBR) Foamed nylon (for pressure > 1 bar use NBR float execution)
Seeger	Bronzo fosforoso Phosphorous bronze
O-Ring	NBR
Tipo contatto Type of contact	Reed N.A./N.C. Reed N.O./N.C.

Max potenza commut. Max switch. capacity	80 W
Max corrente commut. Max switch. current	1 A
Max tensione commut. Max switch. voltage	250 Vac
Grado di protezione Protection degree	IP65 con connettore a norme UNI EN 175301-803 (DIN43650) IP65 with connector according to UNI EN 175301-803 (DIN43650)
Peso specif. liquido Specific fluid weight	> 0.75
Temp. in funzionamento Working temperature	-20°C / +100°C
Peso Weight	~230 gr (per L= 200 mm) ~230 gr (for L= 200 mm)