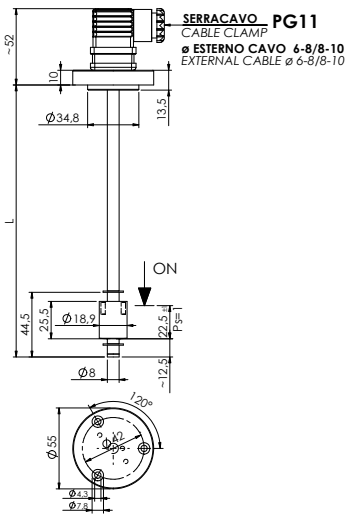
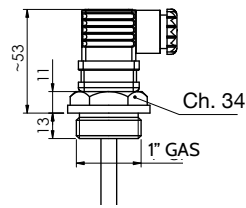


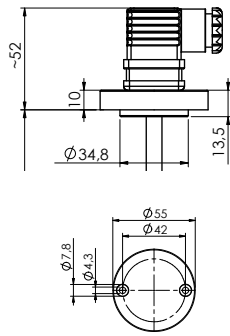
PN30



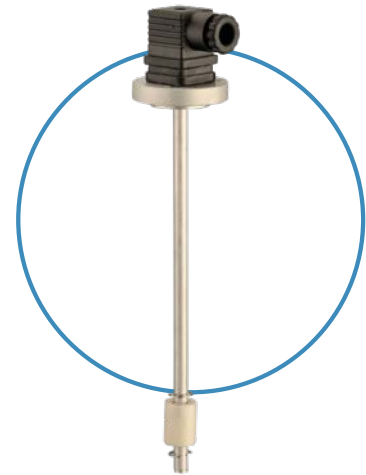
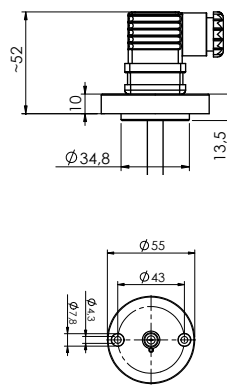
PN31



PN32



PN32P



Codice Part number	
senza liquido - temperatura ambiente <i>without liquid - ambient temperature</i>	
PN3 ▲ ● ■	
● = L. tot. 100÷1000 mm in multipli di 50 mm (per versioni personalizzate contattare Euroswitch) L. tot. 100÷1000 mm in multiples of 50 mm (for customized versions contact Euroswitch)	

▲ Fissaggio Fixing	■ Variabile valore del termistore NTC/PTC Variable NTC/PTC thermistor value
O Flangia 3 fori O 3 holes flange	PT 100 - PT1000 - NTC - PTC - KTY - Ni1000
1 Attacco 1" Gas 1 1" G Thread	
2 Flangia 2 fori Ø 42 mm 2 2 holes flange Ø 42 mm	
2P Flangia 2 fori Ø 43 mm 2P 2 holes flange Ø 43 mm	

Per versioni personalizzate (lunghezza, temp. > 100°C, tensione > 50 V, ecc.) contattare i nostri Uffici Commerciali.
 For customized version (length, temp. > 100°C, voltage > 50 V, etc.) please contact our Customer Service.

Impiego Use	Oli minerali - Carburanti - Acqua Mineral oils - Fuels - Water
Fissaggio Fixing	Alluminio anodizzato Anodized Aluminum
Stelo Stem	Alluminio anticorodal Alluminum anticorodal
Galleggiante Float	Nylon espanso (per pressioni > di 1 bar si consiglia il galleggiante in NBR) Foamed nylon (for pressure > 1 bar use NBR float)
Seeger	Bronzo fosforoso Phosphorous bronze
Tipo contatto Type of contact	Reed N.A. / N.C. - NTC Reed N.O. / N.C. - NTC
Max potenza commut. Max switch. capacity	20 W

Max corrente commut. Max switch. current	1 A
Max tensione commut. Max switch. voltage	<50 Vac
Grado di protezione Protection degree	IP65 con connettore a norme UNI EN 175301-803 (DIN43650) IP65 with connector according to UNI EN 175301-803 (DIN43650)
Peso specif. liquido Specific fluid weight	> 0.75
Temp. in funzionamento Working temperature	-20°C / +100°C
Sensore NTC NTC Sensor	a richiesta on request