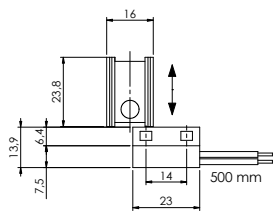
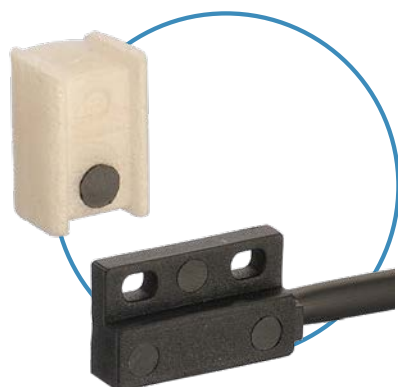
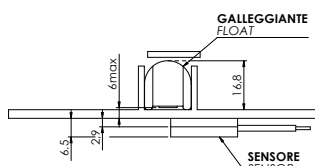


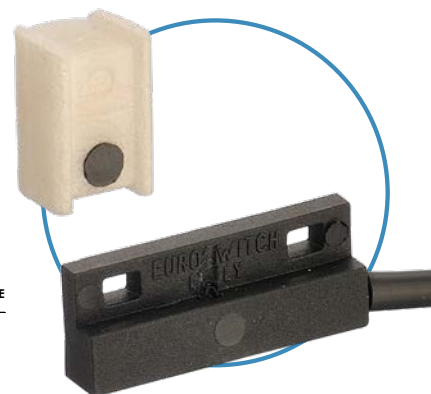
P915



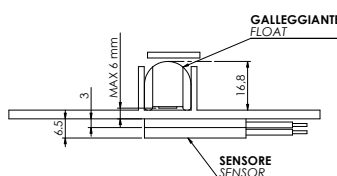
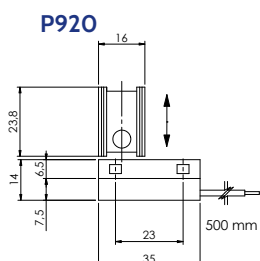
P915



P920



P920



|      |                      | Codice<br>Part number |  |
|------|----------------------|-----------------------|--|
| Mod. |                      |                       | ARANCIONE — NC MARRONE/BROWN<br>ORANGE — NO BIANCO/WHITE |
| P915 | Sensore / Sensor     | P915FZ - 100          | -  |
|      | Galleggiante / Float | GLL016 - 002          | -  |
| P920 | Sensore / Sensor     | P920FZ - 100          | P920FZ - 500   |
|      | Galleggiante / Float | GLL016 - 002          | GLL016 - 002   |

Nel caso di connessioni non isolate devono essere prese le adeguate precauzioni per garantire la distanza minima di sicurezza tra i diversi morsetti. Per versioni personalizzate (tipo di cablaggio, temperatura > 80°C, tensione > 50V, ecc.) contattare Euroswitch.

*When using non-insulated connections, the necessary precautions must be taken to ensure the minimum safety distance between the terminals. For Customized version (type of cable, temperature > 80°C, voltage > 50V, etc.) please contact Euroswitch.*

|   |      |   |
|---|------|---|
| Impiego<br>Use                              |      | Acqua - Acidi - Detergenti<br>Water - Acids - Detergent |
| Stelo<br>Stem                               |      | Nylon   |
| Galleggiante<br>Float                       |      | Polipropilene<br>Polypropylene                          |
| Uscita cablaggio<br>Wiring output           |      | 500 mm PVC  |
| Tipo contatto<br>Type of contact            | P915 | Reed N.A.<br>Reed N.O.                                  |
|   | P920 | Reed N.A. / SPDT<br>Reed N.O. / SPDT                    |
| Max potenza commut.<br>Max switch. capacity | P915 | 10 W  |
|   | P920 | 40 W - (3W SPDT)  |

|   |      |                    |
|---|------|--------------------|
| Max corrente commut.<br>Max switch. current   | P915 | 0.5 A              |
|   | P920 | 1 A - (0.25A SPDT) |
| Max tensione commut.<br>Max switch. voltage   |      | 48 V ac / dc       |
| Peso specif. liquido<br>Fluid specific weight |      | > 0,8              |
| Temp. di funzionamento<br>Working temperature |      | -10°C / +80°C      |
| Peso<br>Weight                                | P915 | ~ 8/10 gr          |
|   | P920 | ~ 10 gr            |