

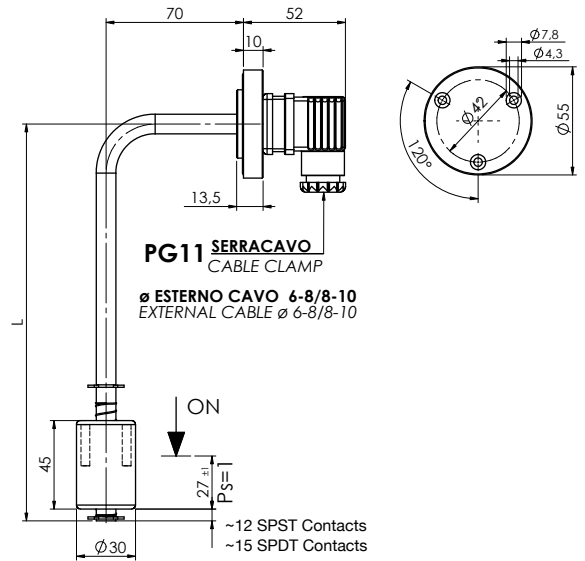
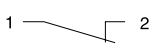
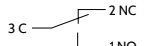


# PG3x SENSORE DI LIVELLO ELETTRIMAGNETICO ELECTROMAGNETIC LEVEL SENSOR

A richiesta sono disponibili le certificazioni:    
Certifications available on request:



	Codice Part number	
Lunghezza / Length mm	1  2	3 C 
103	PG3▲103 - 100	PG3▲103 - 500
200	PG3▲200 - 100	PG3▲200 - 500
250	PG3▲250 - 100	PG3▲250 - 500
300	PG3▲300 - 100	PG3▲300 - 500
350	PG3▲350 - 100	PG3▲350 - 500
Per passare da N.C. a N.A. è sufficiente capovolgere il galleggiante The contact can be converted from N.C. to N.O. by rotating the float upside down	Contatto SPDT SPDT Contact	

▲ Fissaggio Fixing
0 Flangia 3 fori 0 3 holes flange
1 Attacco 1" GAS 1 1" G Thread
2 Flangia 2 fori Ø 42 mm 2 2 holes flange Ø 42 mm
2P Flangia 2 fori Ø 43 mm 2P 2 holes flange Ø 43 mm
3 M18x1.5 3 M18x1.5

Per versioni personalizzate (lunghezza, temperatura > 100°C, ecc.) contattare i nostri Uffici Commerciali.  
For customized version (length, temperature > 100°C, etc.) please contact our Customer Service.

Impiego Use	Oli minerali - Carburanti Mineral oils - Fuels
Montaggio Mounting	Laterale Lateral
Fissaggio Fixing	Flangia in Alluminio 3 fori 3 Holes Aluminum flange
Stelo Stem	Ottone Brass
Galleggiante Float	Nylon espanso (per pressioni > di 1 bar si consiglia il galleggiante in NBR) Foamed nylon (for pressure > 1 bar use NBR float)
Seeger	Bronzo fosforoso Phosphorous bronze
O-Ring	NBR
Tipo contatto Type of contact	Reed N.A./N.C. (SPDT) Reed N.O./N.C. (SPDT)

Max potenza commut. Max switch. capacity	80 W - (50 W SPDT)
Max corrente commut. Max switch. current	1 A - (1 A SPDT)
Max tensione commut. Max switch. voltage	250 Vac - (220 Vac SPDT)
Grado di protezione Protection degree	IP65 con connettore a norme UNI EN 175301-803 (DIN43650) IP65 with connector according to UNI EN 175301-803 (DIN43650)
Peso specif. liquido Specific fluid weight	> 0.75
Temp. in funzionamento Working temperature	-20°C / +100°C
Peso Weight	~ 180 gr